



Mission

We connect our communities

Vision

Getting you there better, faster and easier

Values

Play as a team

Think forward

Serve with passion

go transit, up express, presto



- Serve a population of more than seven million across more than 11,000 square km stretching from Hamilton and Kitchener-Waterloo in the west to Newcastle and Peterborough in the east, and from Orangeville and Beaverton in the north to Niagara Falls in the south.
- In operation since 1967, GO now carries more than 70 million passengers a year.

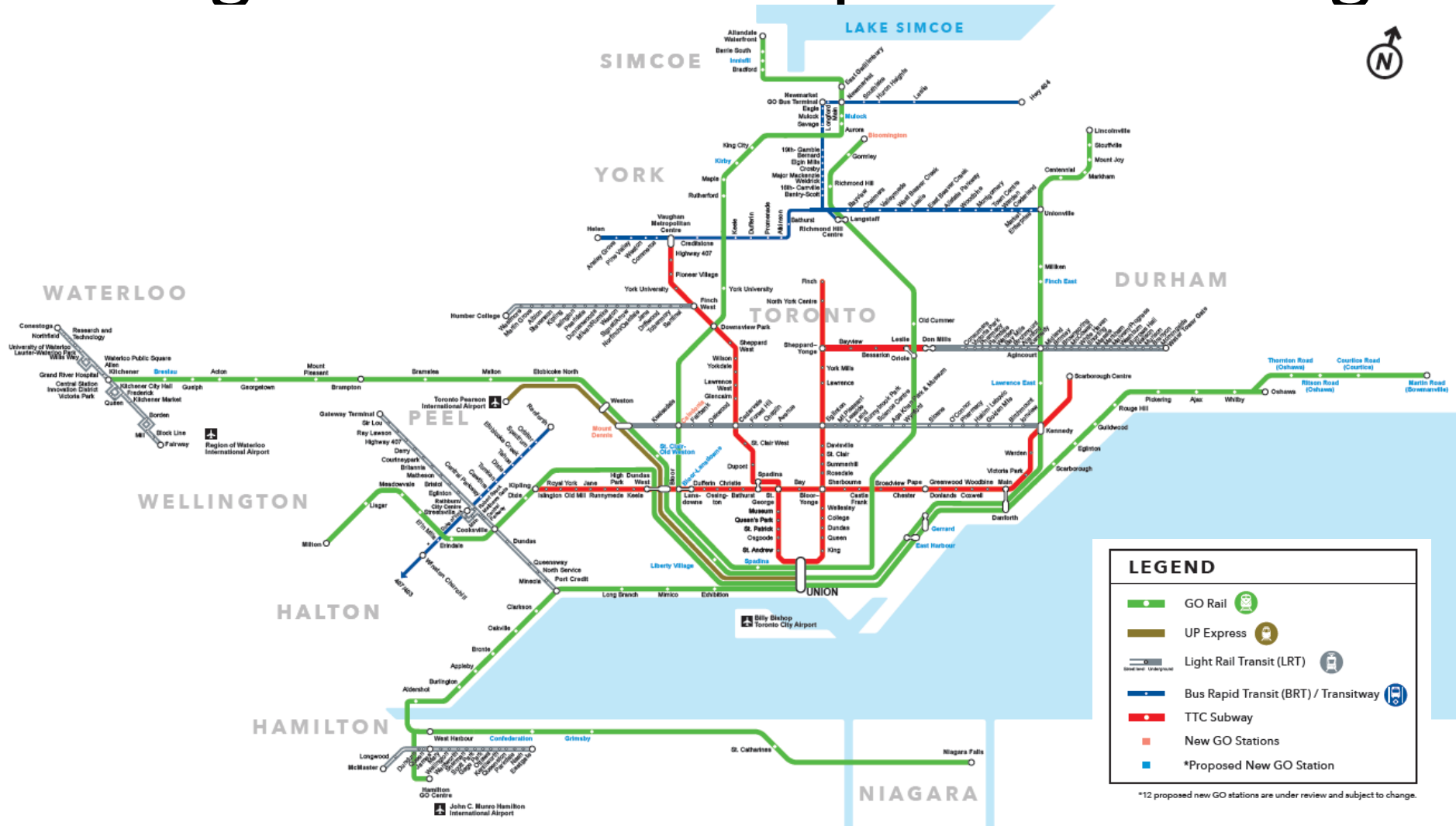


- The PRESTO card is the smart card fare payment system seamlessly connecting 11 transit agencies across the GTHA and Ottawa.
- PRESTO replaces the need for tickets, tokens, passes or cash.



- UP Express connects the country's two busiest transportation hubs: Toronto Pearson International Airport and Union Station in downtown Toronto, offering a 25-minute journey from end to end, with trains departing every 15 minutes.

Regional transit map – connecting



Regional Transportation Plan

- Metrolinx published the first regional transportation plan (RTP) for the Greater Toronto and Hamilton Area (GTHA) in 2008.
- We are required to review the RTP at least every ten years, in alignment with Ontario's Growth Plan for the Greater Golden Horseshoe.
- The legislative review of initial RTP led to the development of the 2041 RTP. **Key outcomes include:**
 - Quadrupling the number of people and doubling the number of jobs within walking distance of Frequent Rapid Transit
 - 27x more kilometres of the Frequent Rapid Transit
 - In addition to the capital costs, successful implementation will also require operating funding for transit services, fare integration and programs for walking and cycling

2041 Regional Transportation Plan

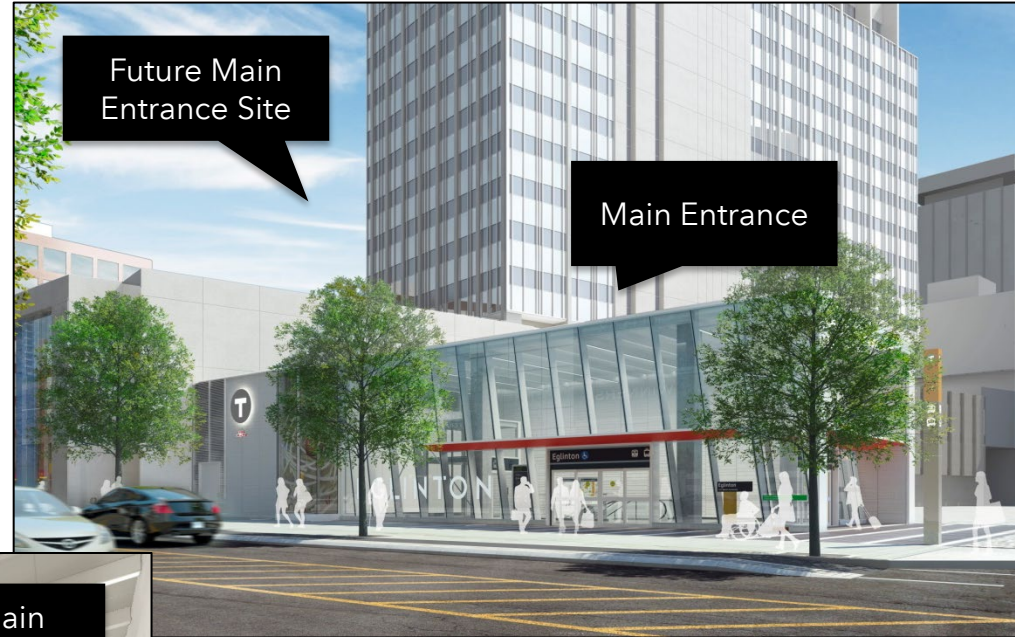
Vision: The GTHA will have a sustainable transportation system that is aligned with land use, and supports healthy and complete communities. The system will provide safe, convenient and reliable connections, and support a high quality of life, a prosperous and competitive economy, and a protected environment.



Eglinton Station – Renderings

Main Entrance Features

- ✓ Accessible entrance
- ✓ Connections to LRT and TTC Line 1 Subway

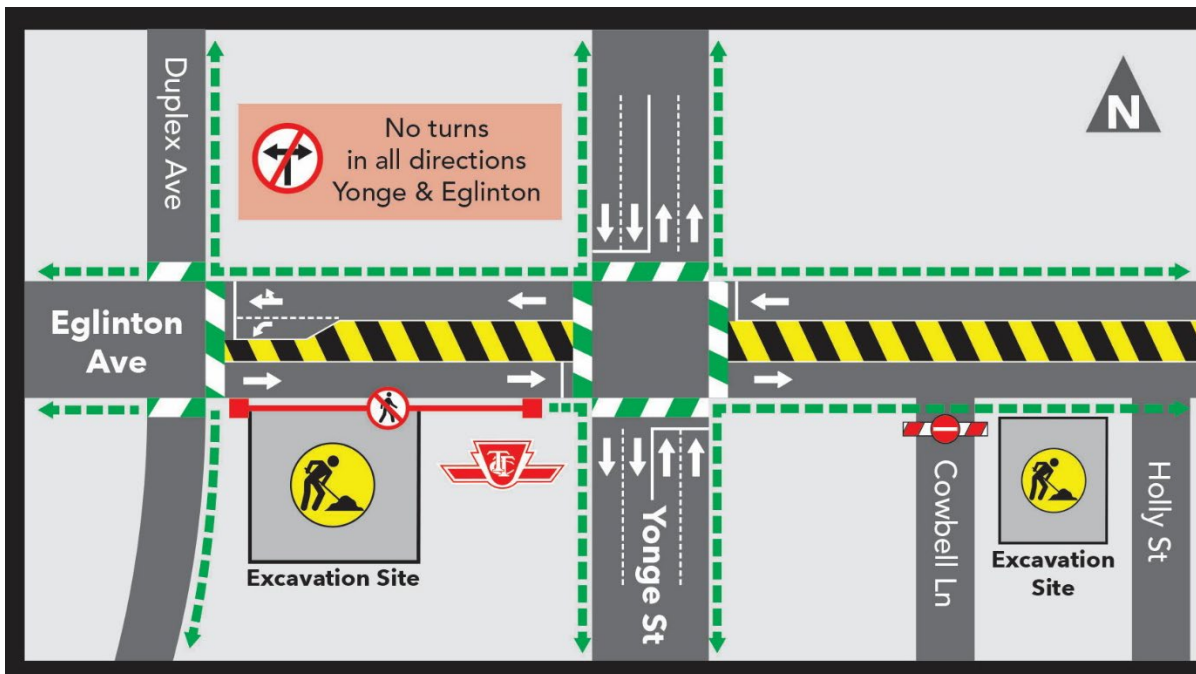


Interchange Station Features

- ✓ Underground connections to all four corners of the intersection including the Yonge-Eglinton Centre and Canada Square

Eglinton Station – Ongoing and Upcoming Works

- Shoring activities (piling, tie-backs, and decking installation) will be ongoing on Eglinton Avenue at Holly Street until Spring 2019.
- Deep excavation is underway in preparation for the underpinning of the TTC Line 1 Subway box.
 - This work includes excavating to the bottom of the future station box (approximately 22 meters at the deepest point).
 - Spoils from the excavation will be extracted and hauled from the existing TTC bus depot site at the southeast corner of Duplex Avenue and Eglinton Avenue West, and the Salvation Army site at the corner of Eglinton Avenue East and Cowbell Lane.
 - Excavation work has been starting as early as 4:00 a.m. to maintain schedule. Noise mitigation efforts will be in place while this work gets underway.



The upcoming traffic configuration (right) will be in place as early as Spring 2019 and will remain for the year.

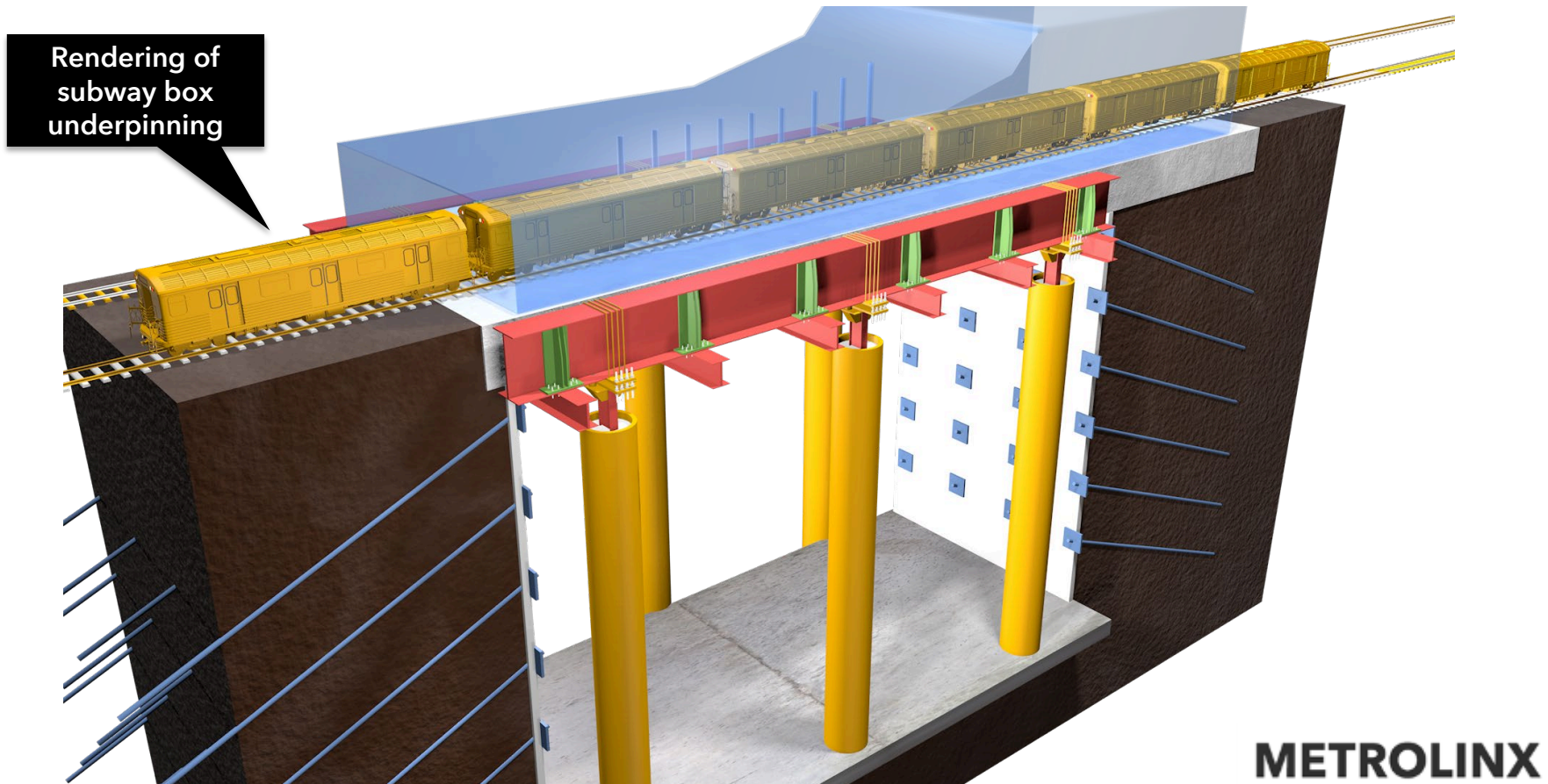
Eglinton Station – Ongoing and Upcoming Works

- Construction of the TTC service building at Berwick Avenue continues with pre-cast concrete installations:
- The subway will close on the weekends crews are working (1:30am Saturday to 6am Monday) to safely carry out the work. For full information and confirmed dates on TTC closures, visit: https://www.ttc.ca/Service_Advisories/Subway_closures/index.jsp
 - Work will occur 24 hours a day on Berwick from 7am Friday to 7am Monday.
 - Additional weekend subway closures are anticipated throughout 2019.



Eglinton Station - Underpinning the TTC Line 1 Subway

- The next major feat at Eglinton Station will be underpinning the TTC's Line 1 Subway box, allowing for excavation down to the bottom of the LRT station box (depicted below).
- With the exception of some weekend closures, the subway will remain in operation during underpinning, excavation, and station construction.



Eglinton Station – Construction Progress Photos

Deep excavation underway at the Salvation Army site



Deep excavation underway west of Yonge St

METROLINX

Mt Pleasant Station Renderings

MAIN ENTRANCE



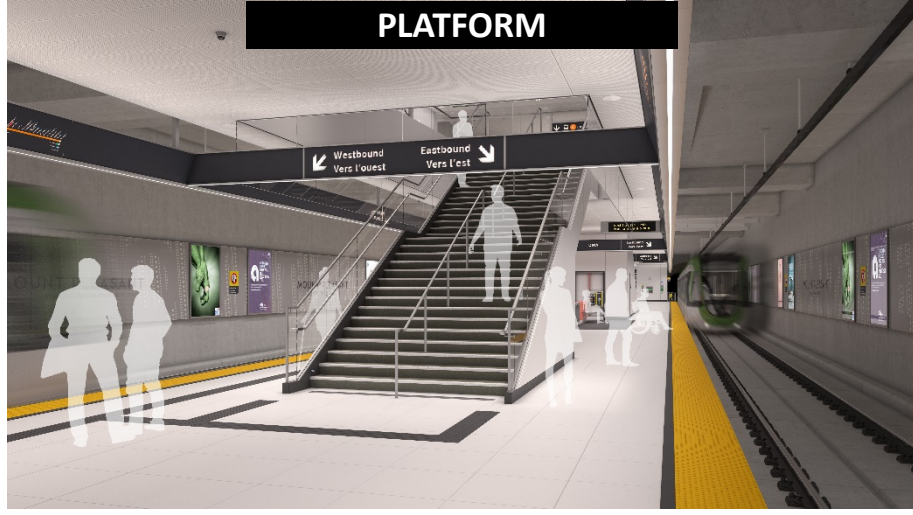
SECONDARY ENTRANCE



CONCOURSE



PLATFORM

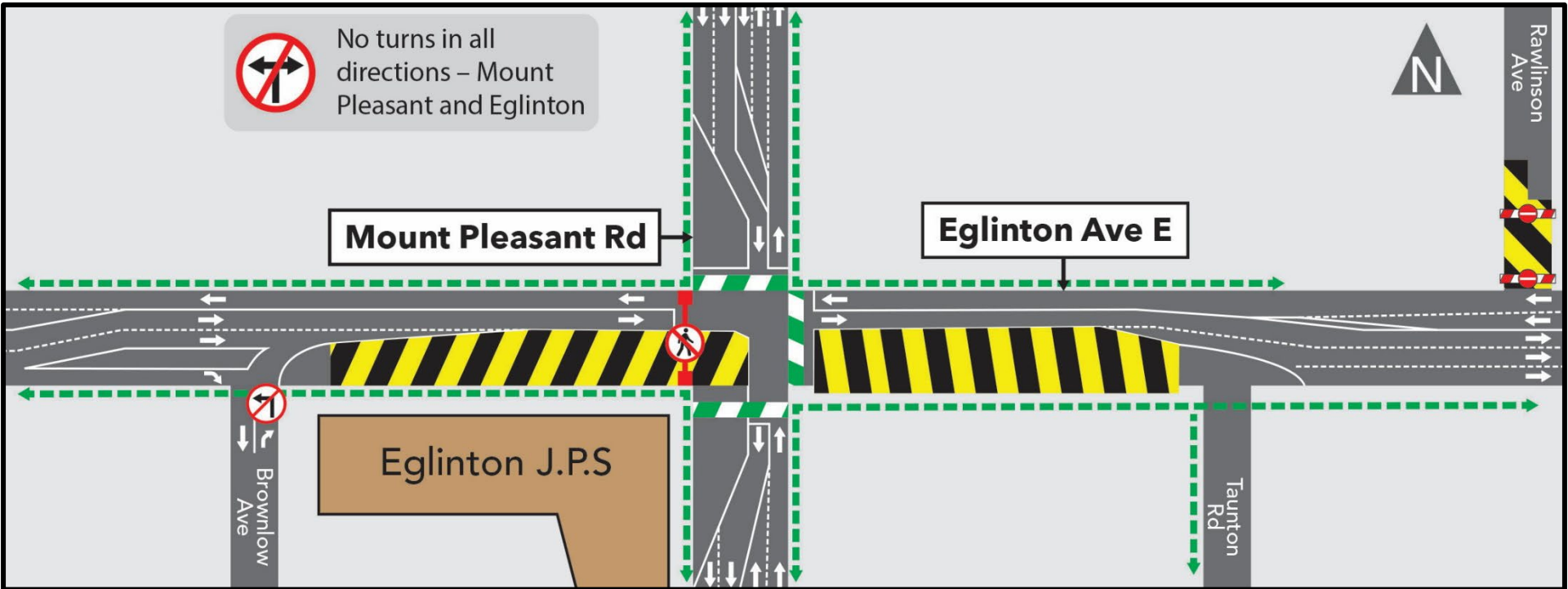


Mt Pleasant Station Update

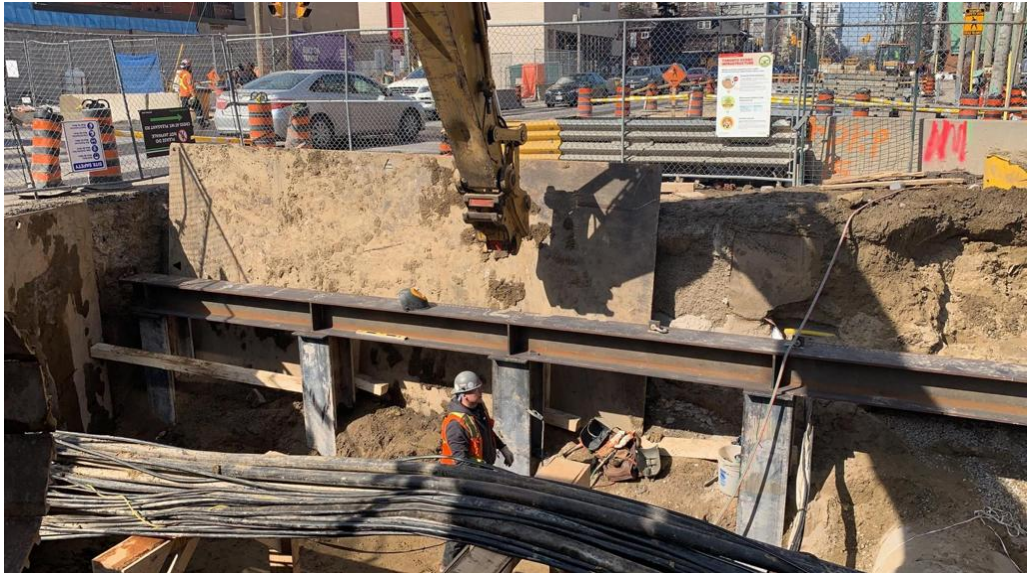
Year	What to Expect
2019	<ul style="list-style-type: none"><li data-bbox="440 382 1673 491">• Excavation and roof construction on the south side of Eglinton Ave<li data-bbox="440 554 1779 662">• Construction will move to the north side of Eglinton Ave in August 2019<li data-bbox="440 725 1669 833">• Excavation and roof construction on the north side of Eglinton Ave
2020	<ul style="list-style-type: none"><li data-bbox="440 861 1789 969">• Eglinton Ave and Mt Pleasant Rd will return to two lanes in each direction, with some road occupation for truck access<li data-bbox="440 1032 1615 1078">• Deep excavation and station entrance construction

Mt Pleasant Station Staging

Mid-March 2019 through July 2019



Mt Pleasant Station Progress Photos



Leaside Station - Renderings

AERIAL VIEW



MAIN ENTRANCE



ENTRANCE INTERIOR



SECONDARY ENTRANCE

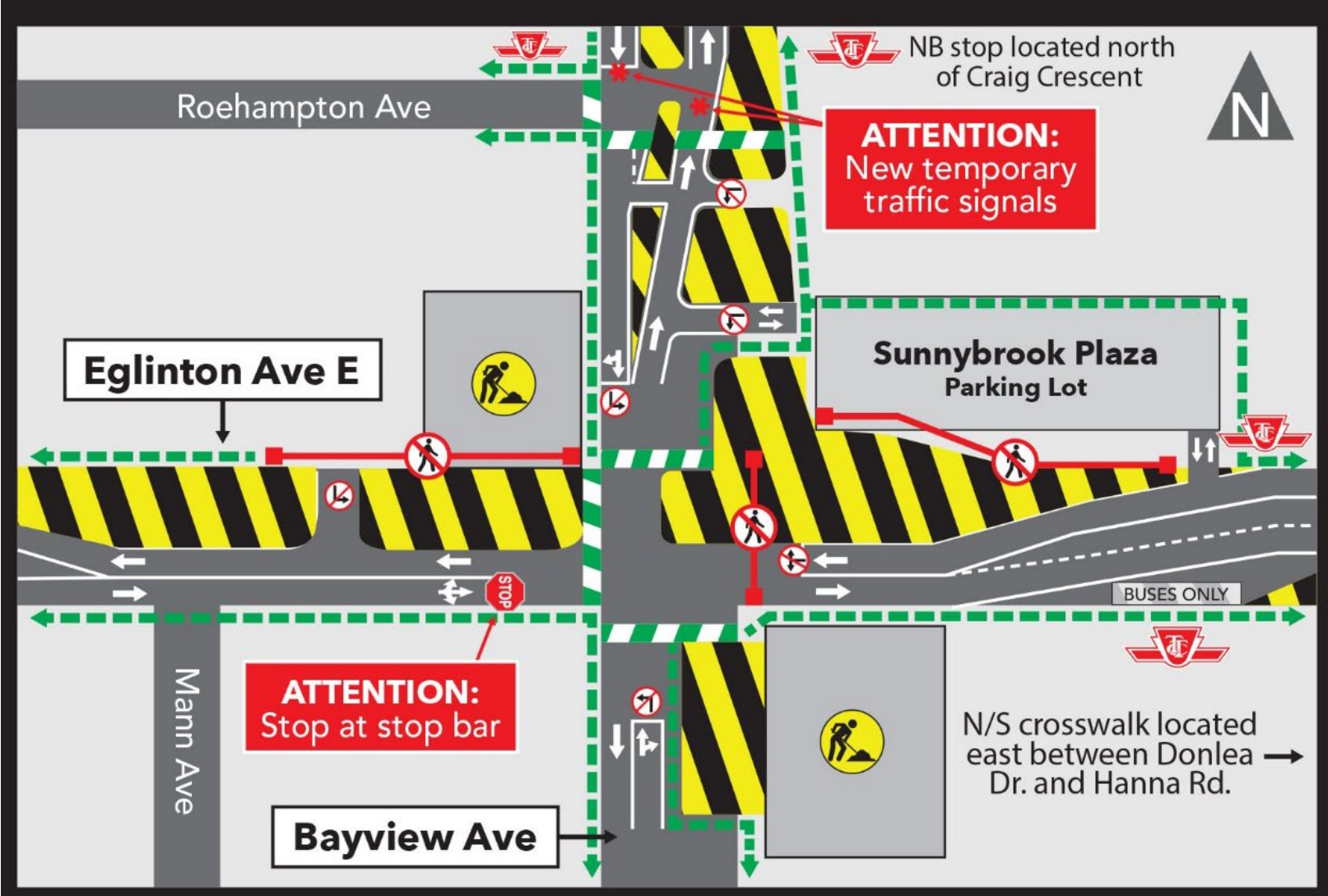


Leaside Station Update

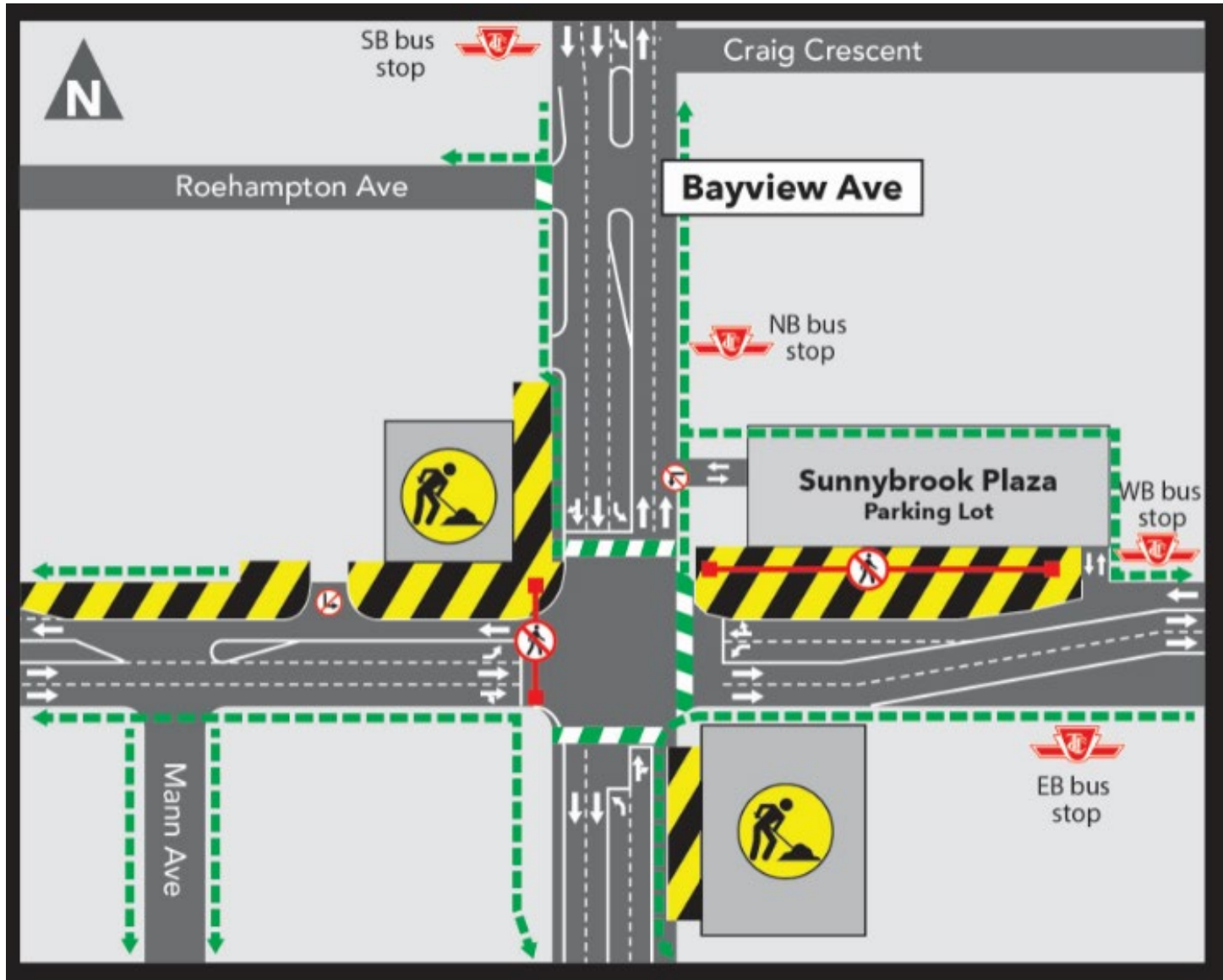
- Wet utilities work, excavation, earth hauling and concrete and material deliveries will continue on the surface throughout 2019.
- Traffic conditions will change in late March to facilitate works on a large water main on the NE corner of Bayview and Eglinton.
- In June 2019 traffic conditions will change to support the deep excavation works.
- Main and Secondary Entrance sites will be the main access points for the deep excavation underneath Eglinton Avenue.
- Large tower cranes will be installed in both entrances to facilitate deep excavation works (Summer 2019).

Leaside Station Staging

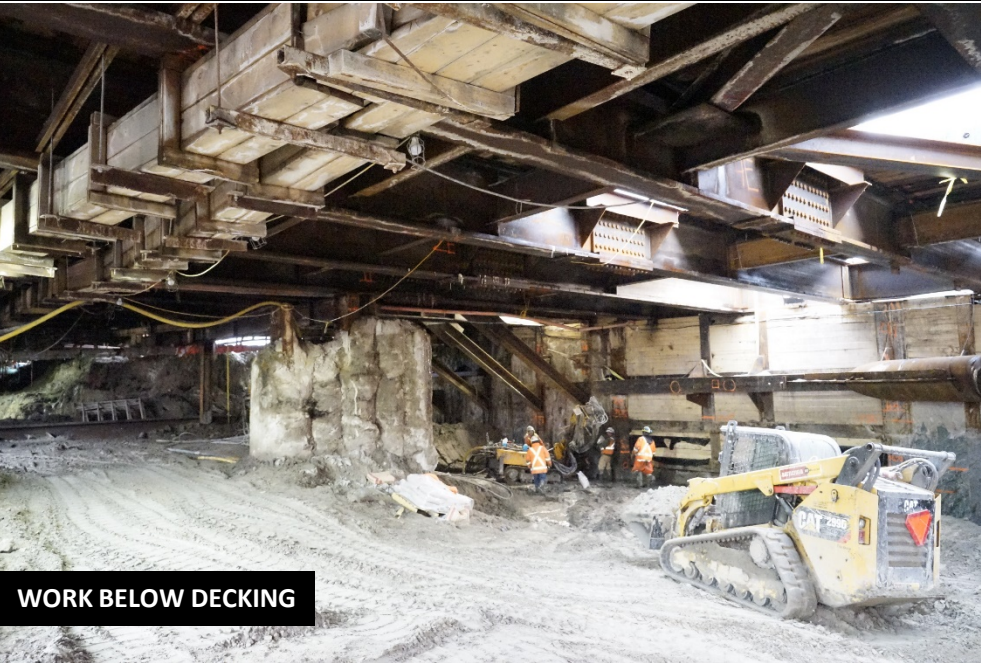
- March 25 2019 to early June 2019



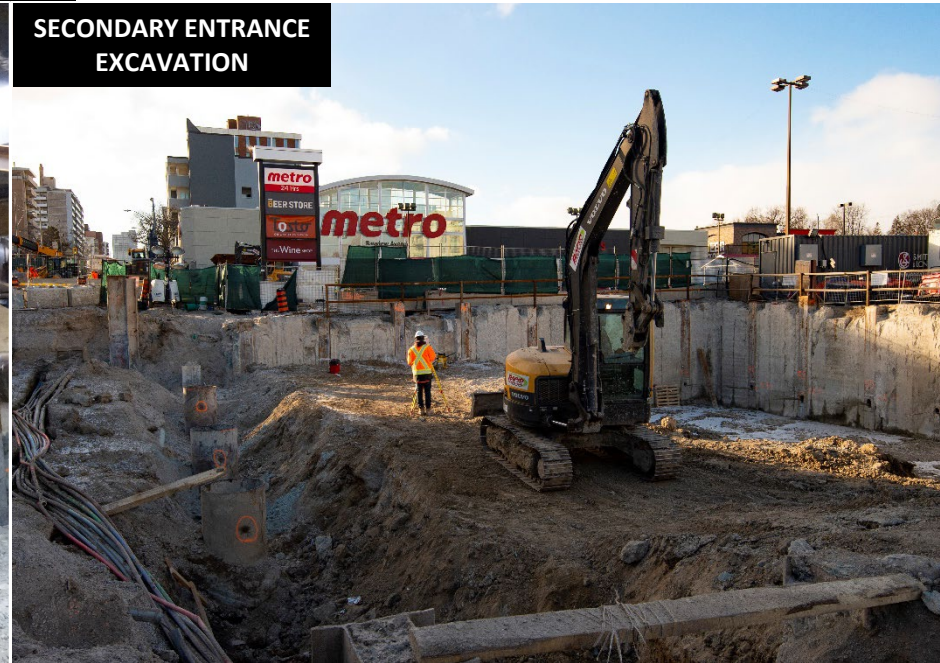
Leaside Station Staging - June 2019 to late 2019



Leaside Station - Renderings



WORK BELOW DECKING



SECONDARY ENTRANCE EXCAVATION



TRAFFIC DECK INSTALLATION



MAIN ENTRANCE EXCAVATION

Laird Station - Renderings

AERIAL VIEW



MAIN ENTRANCE



ENTRANCE INTERIOR



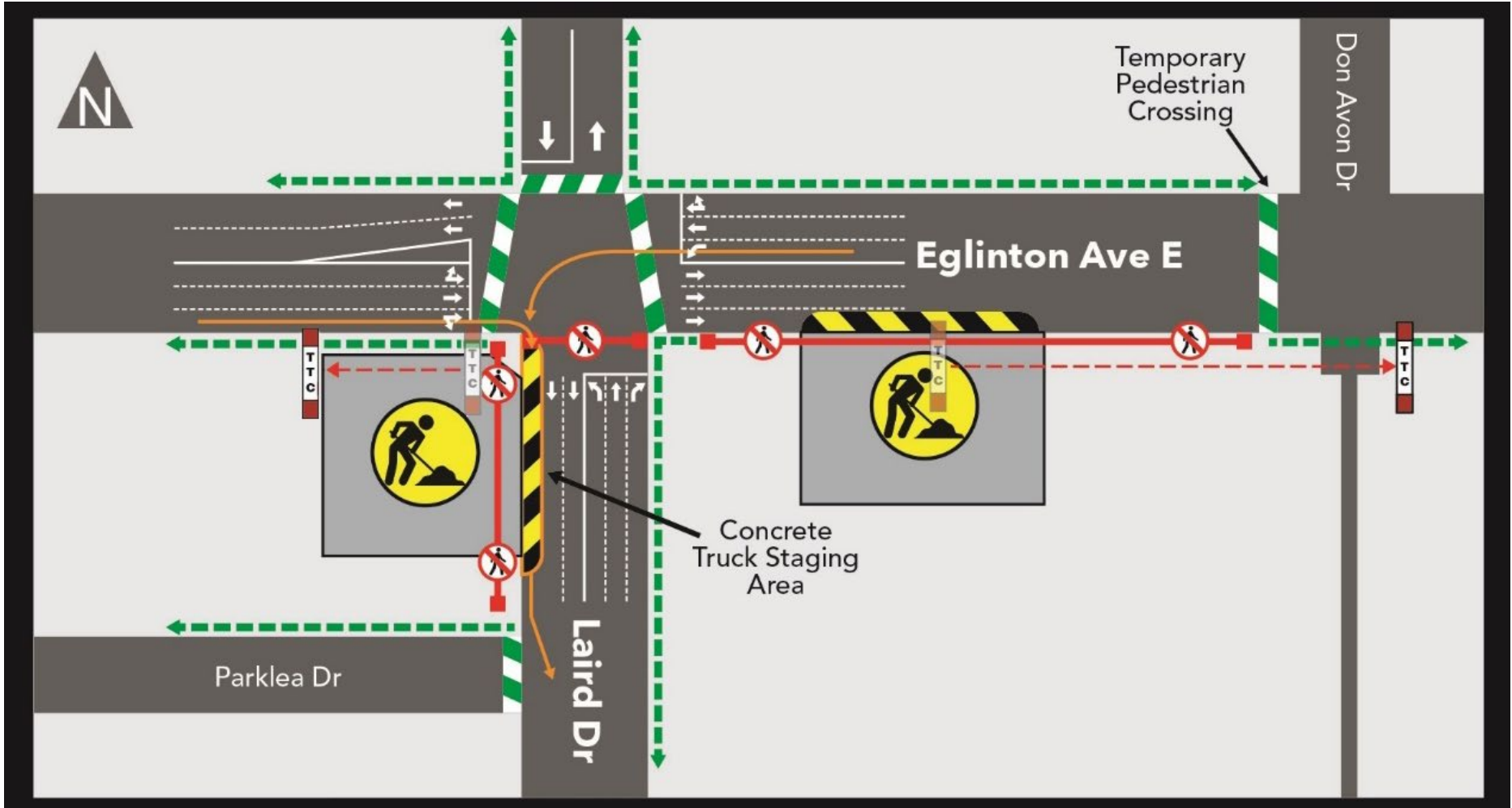
SECONDARY ENTRANCE



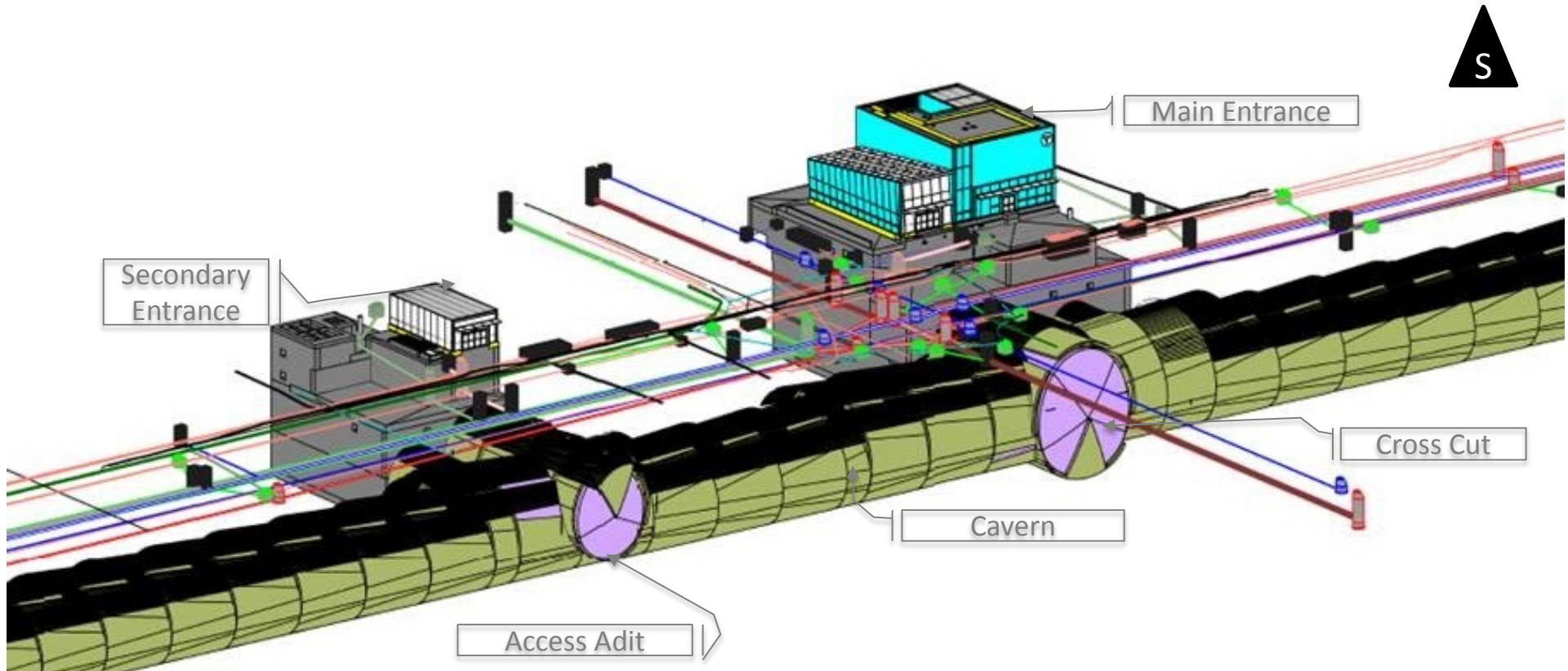
Laird Station Update

Year	What to Expect
2019-2020	<ul style="list-style-type: none">• 24 hour mining excavation work will continue to late 2019• Final lining works are underway in the cavern between the main and secondary entrances.• Final lining will begin on other sections of the cavern as mining excavation is completed. This work will be ongoing to early 2020.<ul style="list-style-type: none">• Waterproofing and concrete works for station foundation, walls, ceiling and platforms will occur inside of the complete caverns.• During concrete pour operations, there will be continuous delivery of concrete to the surface site.• In late 2019, final lining works will begin in the main and secondary entrance shafts.• Architectural works and track & systems installation will begin in 2020

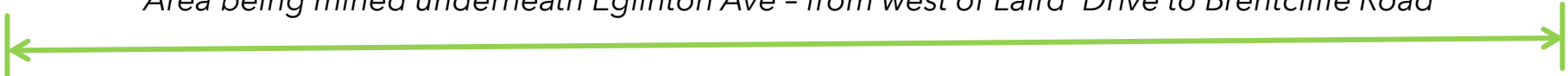
Laird Station Staging



Laird Station Mining Works



Area being mined underneath Eglinton Ave - from west of Laird Drive to Brentcliffe Road



Laird Station Progress Photos



WATERPROOFING & CAVERN VIEW



PREPARATION FOR ARCH POUR



CAVERN MINING EXCAVATION



PREPARATION FOR ARCH POUR